

Lighting, Fixtures and Equipment

CONTROL

| | | |
|---|------------------------------------|--|
| 1 | ETC Express 48/96 lighting console | |
|---|------------------------------------|--|

DIMMERS

| | | |
|---|---|--|
| 8 | Stand Act 6 DMX dimmer (48 10amp Channels all together) | |
| 3 | Zero88 Beta pack (18 10amp Channels all together) | |

FOLLOW SPOTS

| | | |
|---|--|--------|
| 2 | Selecon performer 1200W (balcony left & right) | 1,200W |
| 1 | Robert Juliat Alex tungsten 2500W (control room) | 2,500W |

FRESNEL

| | | |
|---|-------------------------------------|--------|
| 8 | Strand Harmony Fresnel + barn doors | 1,000W |
| 8 | Strand Patt743 Fresnel 1000W | 1,000W |
| 3 | Strand minim F (650W) | 650W |

PAR

| | | |
|----|-----------------------------|--------|
| 22 | ETC Source Four PAR EA | 750W |
| 5 | Par 64 Long nose Cans black | 1,000W |

FLOOD

| | | |
|---|--------------------------|--------|
| 7 | Strand Nocturne 4-cell | 500W |
| 4 | Strand Nocturne 1-cell | 1,000W |
| 4 | Acclaim cyc flood 1-cell | 500W |

PROFILE

| | | |
|---|-----------------------------------|--------|
| 4 | ETC Source Four JR Zoom 25" - 50" | 575W |
| 4 | Strand Cantata 18/32 Profile | 1,200W |
| 2 | Strand Harmony 15/28 Profile | 1,000W |
| 4 | Strand Harmony 12 Profile | 1,000W |
| 8 | Strand Leko 40 | 1,000W |

OTHER

| | | |
|---|--|--|
| 1 | 15" mirror ball + motor | |
| 1 | Fibre optic star cloth fixed to back tabs (10m x 5m) | |

15Amp Pre wired bars/circuit locations to dimmer room

| STAGE SIDE | | |
|-----------------------------------|--------------------------------|------------|
| LX Bar 1 | 16 circuits (no75 - 90) | 250KG load |
| LX Bar 2 | 12 circuits (no91 - 102) | 250KG load |
| LX Bar 3 | 9 circuits (no103 - 111) | 250KG load |
| Patch Box | Moveable to any upstage bar | |
| | | |
| Stage left cyc wall | 3 circuits (no122 - 124) | |
| Stage right cyc wall | 3 circuits (no131 - 133) | |
| Stage left mid wall | 3 circuits (no119 - 121) | |
| Stage right mid wall | 3 circuits (no128 - 130) | |
| Stage left front wall | 3 circuits (no116 - 118) | |
| Stage left front wall | 3 circuits (no125 - 127) | |
| | | |
| FRONT OF HOUSE | | |
| Foot of stage | 3 circuits (no134 - 136) | |
| | | |
| LX Bar 1 | 10 circuits (no65 - 74) | 250kg load |
| 5 Stage left upright bars | 6 circuits per bar (no1 - 30) | |
| 5 Stage right upright bars | 6 circuits per bar (no31 - 60) | |
| | | |
| Balcony back wall | 4 circuits (no137 - 140) | |
| Control room | 4 circuits (no141 - 144) | |

DMX Patch bays

| STAGE SIDE | | |
|--------------------------------|-----------------|-------------------|
| Stage Right Front Wall | 1 5 pin XLR Out | From Dimmer room |
| Stage Right Centre Wall | 1 5 pin XLR Out | From Dimmer room |
| Stage Left Front Wall | 1 5 pin XLR Out | From Dimmer room |
| Stage Right Back Wall | 1 5 pin XLR Out | From Dimmer room |
| Stage Left Back Wall | 1 5 pin XLR Out | From Dimmer room |
| Foot of Stage | 1 5 pin XLR Out | From Dimmer room |
| Stage Left Front Wall | 1 5 pin XLR In | To Dimmer room |
| Stage Left Front Wall | 2 5 pin XLR Out | From Back of hall |
| LX Bar 1 | 1 5 pin XLR Out | From Dimmer room |
| LX Bar 2 | 1 5 pin XLR Out | From Dimmer room |
| LX Bar 3 | 1 5 pin XLR Out | From Dimmer room |
| | | |
| FRONT OF HOUSE | | |
| LX Bar 1 | 1 5 pin XLR Out | From Dimmer room |
| Control Room | 1 5 pin XLR in | To Dimmer room |
| | | |

Back stage communications

| | | |
|----------|---------------------------------|---|
| 1 | Stonewood Audio | Power supply (Locating in control room) |
| 2 | Stonewood Audio Granite CLS1 | Single channel speaker station |
| 4 | Stonewood Audio Granite CBP1 | Single channel belt pack |
| 5 | Stonewood Audio Granite SA-CHS1 | Single muff headset |

Constant Power Locations

| STAGE SIDE | | |
|-----------------------|----|--------------------|
| Stage left front wall | 1 | 63Amp three phase |
| | 1 | 32Amp Single phase |
| | 2 | 13Amp |
| Stage left back wall | 2 | 13Amp |
| Stage right mid wall | 4 | 13Amp |
| | | |
| FRONT OF HOUSE | | |
| Foot of stage | 4 | 13Amp |
| Main hall FOH left | 4 | 13Amp |
| Main hall FOH right | 6 | 13Amp |
| Main hall back | 10 | 13Amp |
| | | |
| Balcony back wall | 6 | 13Amp |
| Control room | 14 | 13Amp |

Stage Drapes and tabs

| TABS & BORDERS | | |
|------------------------------------|---------------|---|
| LOCATION | CONTROL | CONTROL LOCATION |
| Front of house RED | Electronic | Downstage left, Downstage right, Control room |
| Downstage BLACK | Manual winch | Downstage right wings |
| Upstage Black | Manual winch | Upstage right wings |
| Back cyclorama wall | Manual pulley | Back wall right wings |
| SWIPE TRACK | | |
| In front of downstage Black tabs | | Static Loaded from gantry Stage Left |
| Behind downstage Black Tabs | | Static Loaded from gantry Stage Left |
| In front of upstage Black tabs | | Static Loaded from gantry Stage Left |
| Additional length with clamps | | Can be moved to any Hemp Line |
| LEGS & BORDERS | | |
| Between downstage and upstage tabs | | Static hemp line stage right wings |
| Between upstage tabs and cyclorama | | Static hemp line stage right wings |

Hemp Lines (all have 65KG load limit)

BETWEEN DOWNSTAGE TABS AND UPSTAGE TABS

| | |
|----------|---|
| 6 | Hemp line stage right wings (2 in use for legs and borders) |
|----------|---|

BETWEEN UPSTAGE TABS AND CYCLORAMA

| | |
|-----------|---|
| 10 | Hemp line stage right wings (3 are in use for legs and borders) |
|-----------|---|

Sound equipment

MIXING DESK

| | | |
|----------|-----------------------|---|
| 1 | Alien and heath ml300 | Locating in control room (can be moved to back or front of hall given prior notice) |
| 1 | Electronic | Single channel belt pack |
| 1 | Sound craft spirit F1 | Mobile PA system |

AMPLIFIERS (NOT TO BE MOVED)

| | | |
|----------|-------------------------|---------------------------------------|
| 1 | Crown Micro Tech 3600VZ | FOH Left & Right |
| 1 | Crown Micro Tech 1200 | FOH centre fill & Balcony centre fill |
| 1 | Crown Micro Tech 1200 | Balcony Left & Right |
| 1 | QSC RMX 2450 | Left & Right Bass Bins |
| 1 | Lab.Gruppen Lab 1200C | (4 Channel) Stage Monitors |
| 1 | Mobile PA system | |
| 1 | Avx Pda1000/2 | Induction Loop Driver |

SPEAKER PROTECTION AND CROSSEOVERS (NOT TO BE MOVED OR BYPASSED)

| | | |
|----------|----------------------------------|-------------------------------------|
| 1 | Formula sound guardian gx4 mk2 | FOH |
| 1 | Nexo ps15 analogue TD controller | FOH Left and Right |
| 2 | Nexo ps10 analogue TD controller | Balcony Left, Right and Centre Fill |

Sound equipment

SPEAKERS

| | | |
|---|----------------------------|---|
| 2 | Nexo ps15 | Left & right front of house (2000W) (Not to be moved) |
| 3 | Nexo ps10 | Balcony Left, Right & centre fill (1250W) (not to be moved) |
| 1 | Martin Audio WTUB | FOH centre fill (200W, 800W Peak) (not to be moved) |
| 2 | Yamaha sm12V | Left & right stage monitors (700W) |
| 4 | Thomann (the box) TP18/600 | Bass bins (installed on prior request) |
| 4 | Thomann (the box) TP12/300 | Used for spare midrange tops |
| 2 | | Mobile PA system |

PROCESSORS Located in control room (can be relocated with prior notice)

| | | |
|---|-------------------------|--|
| 2 | Sabine GRQ3102 EQs | FOH left & right/ FOH & Balcony centre fills (not to be moved) |
| 2 | Symetrix 402 delay | Balcony left and right (not to be moved) |
| 1 | Crown Micro Tech 1200 | Main centre fill & Balcony centre fill |
| 1 | Crown Micro Tech 3600VZ | Left & right stage monitors |
| 1 | Lexicon MX200 | Dual Reverb/Effects Processor |
| 1 | Lexicon MX300 | Stereo Reverb Effects Processor |

MICROPHONES WIRELESS

| | | |
|---|-------------------------------------|--|
| 8 | Sennheiser EW100 receiver | 6 receivers located in control room, 2 receivers located in mobile PA (all receivers can be relocated with prior notice) |
| 4 | Sennheiser hand held | Vocal hand held transmitter |
| 6 | Sennheiser SK100 EW300 body pack G2 | Body packs transmitter |
| 6 | Sennheiser head worn capsule | For use with Sennheiser body pack transmitters |
| 3 | Sennheiser black lapel capsule | For use with Sennheiser body pack transmitters |
| | | |

MICROPHONES WIRED

| | | |
|---|-----------------------|---|
| 4 | Audio Technica atm650 | Hypercardioid dynamic instrument microphone |
| 1 | Audio Technica atm710 | Cardioid condenser handheld |
| 2 | Audio Technica atm33a | Cardioid condenser |

Sound equipment

| | | |
|-----------------------------|-----------------------|---|
| 1 | Audio Technica pro41 | Cardioid dynamic hand held microphone |
| 5 | Audio Technica AT815b | Shotgun microphone |
| 3 | Shure SM58 | Cardioid, unidirectional dynamic vocal microphone |
| 3 | T.bone MB85 beta | Supercardioid dynamic microphone |
| 1 | T.bone MB75 | Cardioid dynamic microphone |
| 2 | AKG C451E C 451 E | Cardioid condenser (old taped) |
| 1 | Crown CM-200A | Cardioid condenser microphone |
| 2 | Samson CM12C BK | Cardioid condenser hanging microphone |
| | | |
| DIRECT INJECTION BOX | | |
| 4 | Stage line dib100 | Passive |
| | | |
| AUDIO PLAYBACK | | |
| 1 | Rotel RD-955AX | Stereo cassette deck |
| 1 | Dual CD player | Mobile PA system |
| 1 | Dual tape deck | Mobile PA system |
| 1 | Numark CDN450 | Dual MP3/CD Player |

Sound Patch bays

| STAGE SIDE | | |
|------------------------------|---------------------|----------------------|
| Stage left front wall | 12 3 pin XLR sends | To control room |
| | 2 3 pin XLR returns | From control room |
| | 1 speaker con | To stage monitor amp |
| | 1 coms | To control room |
| Stage left back wall | 1 speaker con | To stage monitor amp |

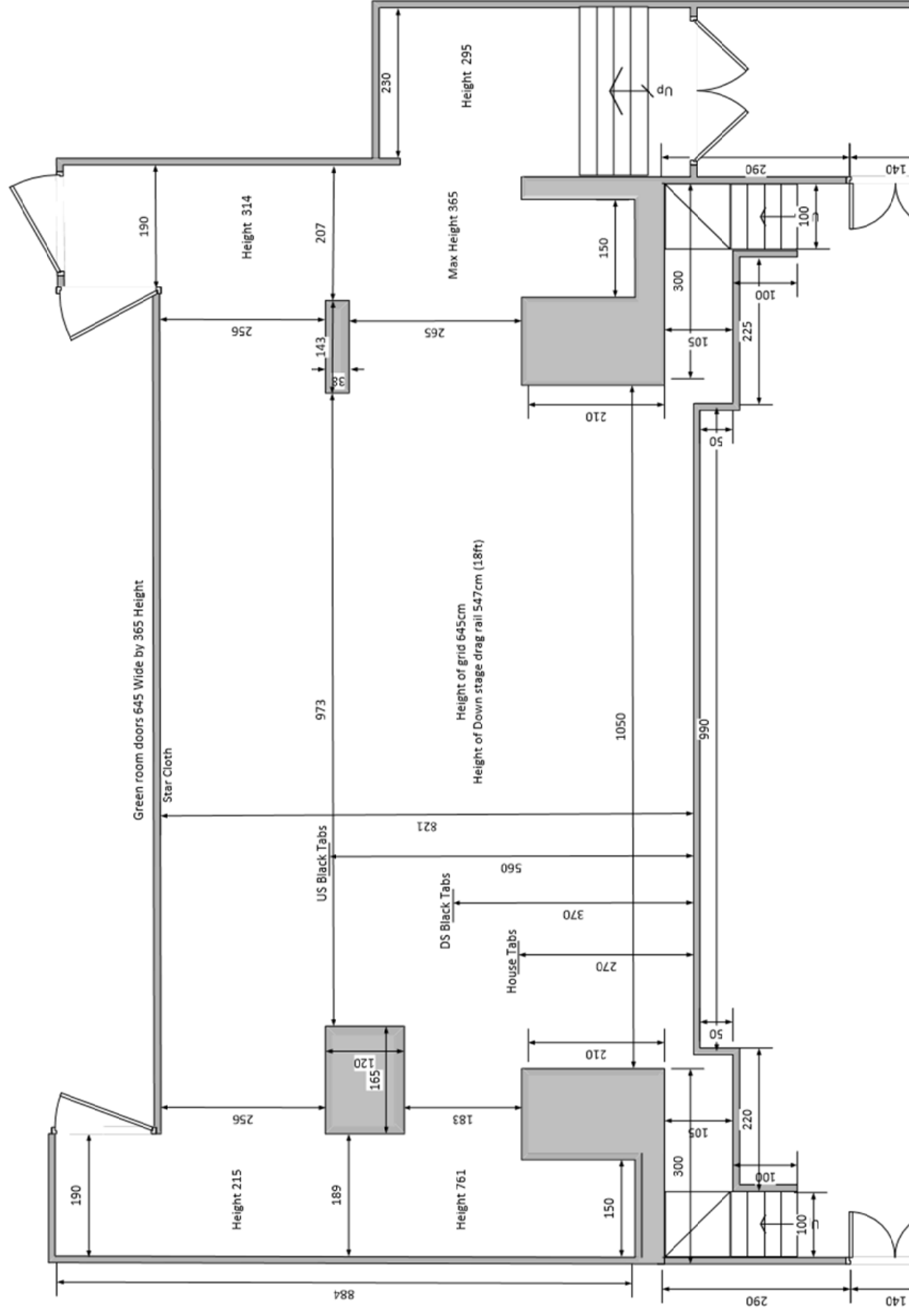
Sound Patch bays

| STAGE SIDE | | |
|--------------------------------|---------------------|------------------------|
| Stage right front wall | 12 3 pin XLR sends | To control room |
| | 2 3 pin XLR returns | From control room |
| | 1 speaker con | To stage monitor amp |
| | 1 coms | To control room |
| Stage right back wall | 1 speaker con | To stage monitor amp |
| FRONT OF HOUSE | | |
| Main hall left | 1 3 pin XLR sends | To control room |
| Main hall right | 1 3 pin XLR sends | To control room |
| Main hall back | 1 harting connector | To control room |
| Front of stage | 1 Speaker con | Sub Bass Amp |
| PRODUCTION CAT6 ETHERCON PATCH | | |
| 1 | Control Room | Stage left Front Wall |
| 1 | Control Room | Stage Right Front Wall |
| 1 | Control Room | FOH LX bar |
| 1 | Control Room | Dimmer Room |
| 3 | Back of hall stage | Left Front wall |

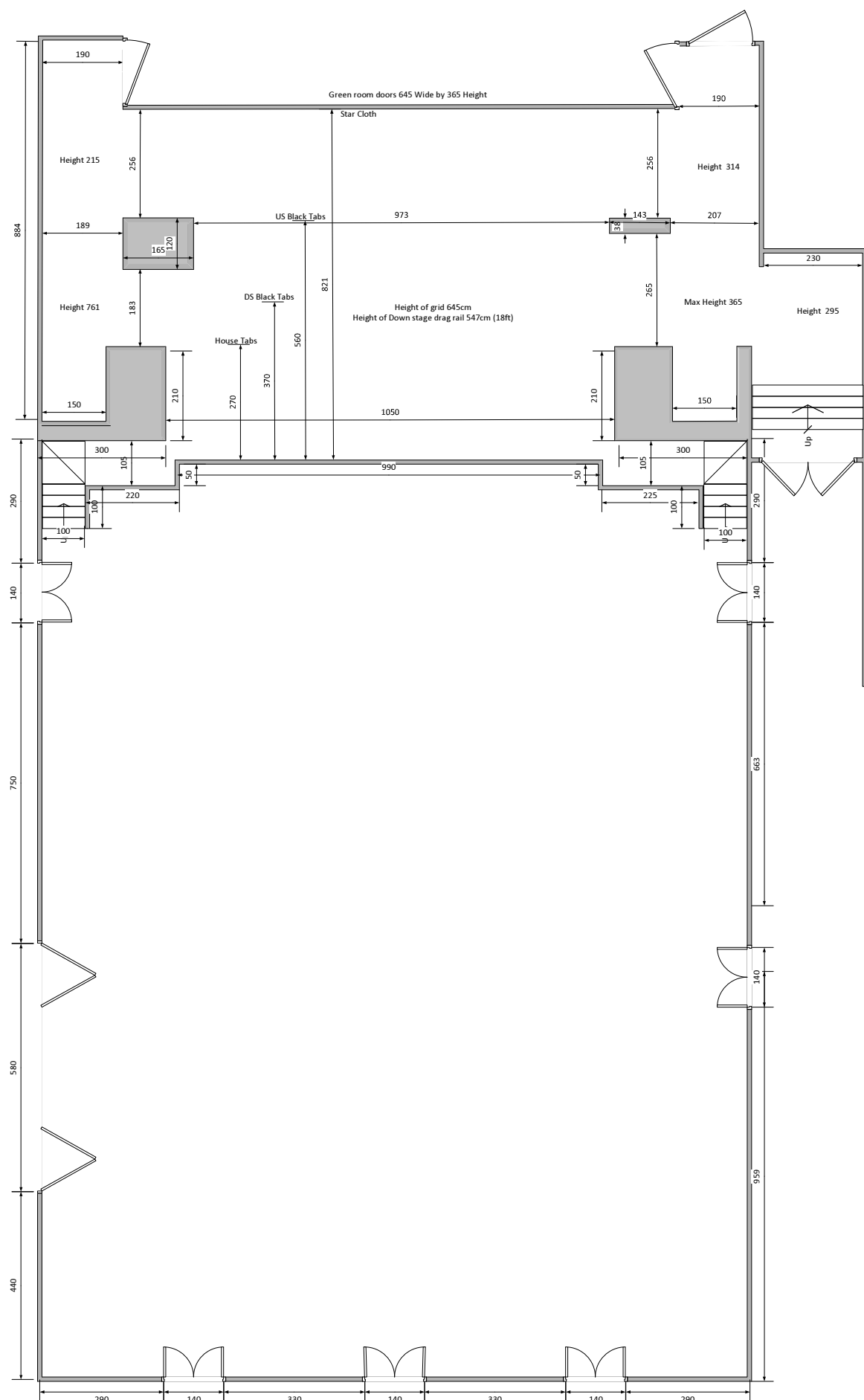
Pyrotechniques

| HARDWARE | |
|------------|--|
| 1 | LeMaitre prostage 6-way controller |
| 6 | LeMaitre flash pod standard - This is a exasperate item Selection of pyro leads of varying length |
| 2 | LeMaitre Flash Pod Angled |
| PATCH BAYS | |
| 1 | Control room to down stage right |
| 1 | Control room to down stage left |
| | Given prior notice pyrotechnics can be cabled anywhere in the hall (health and safety permitting) |

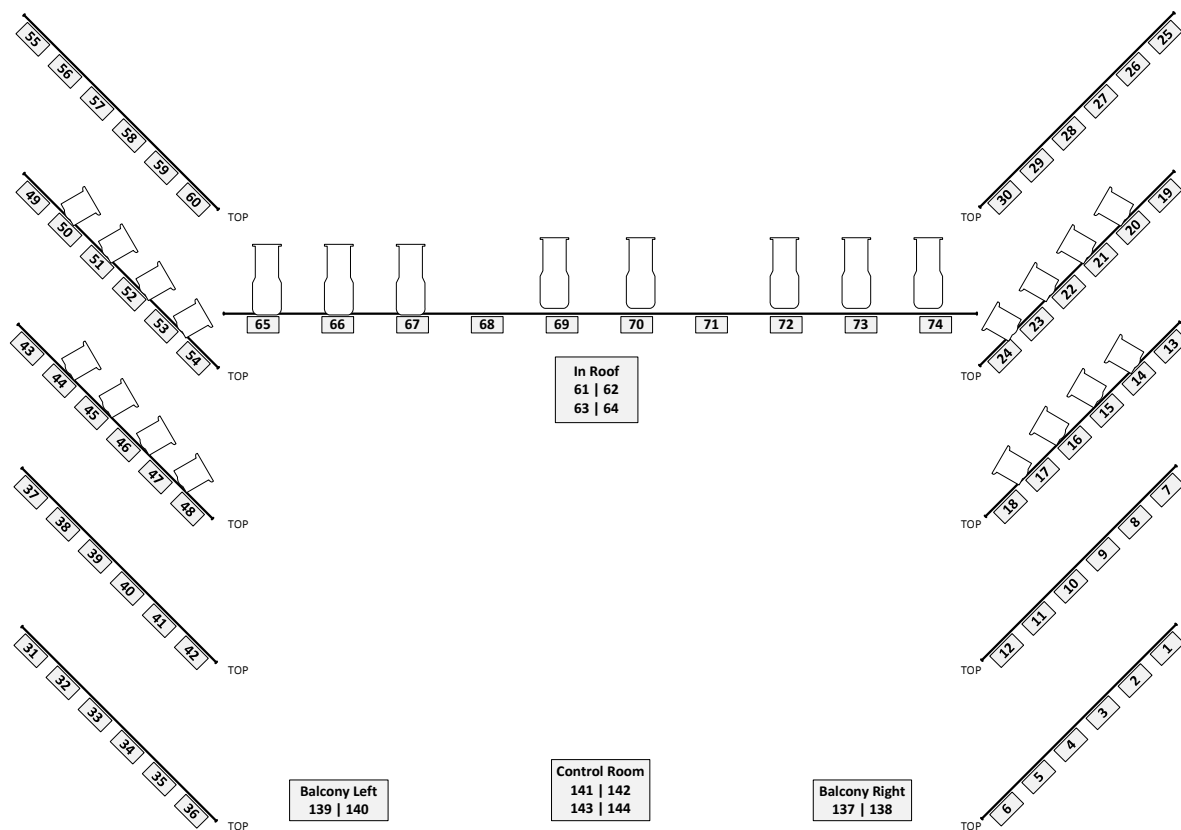
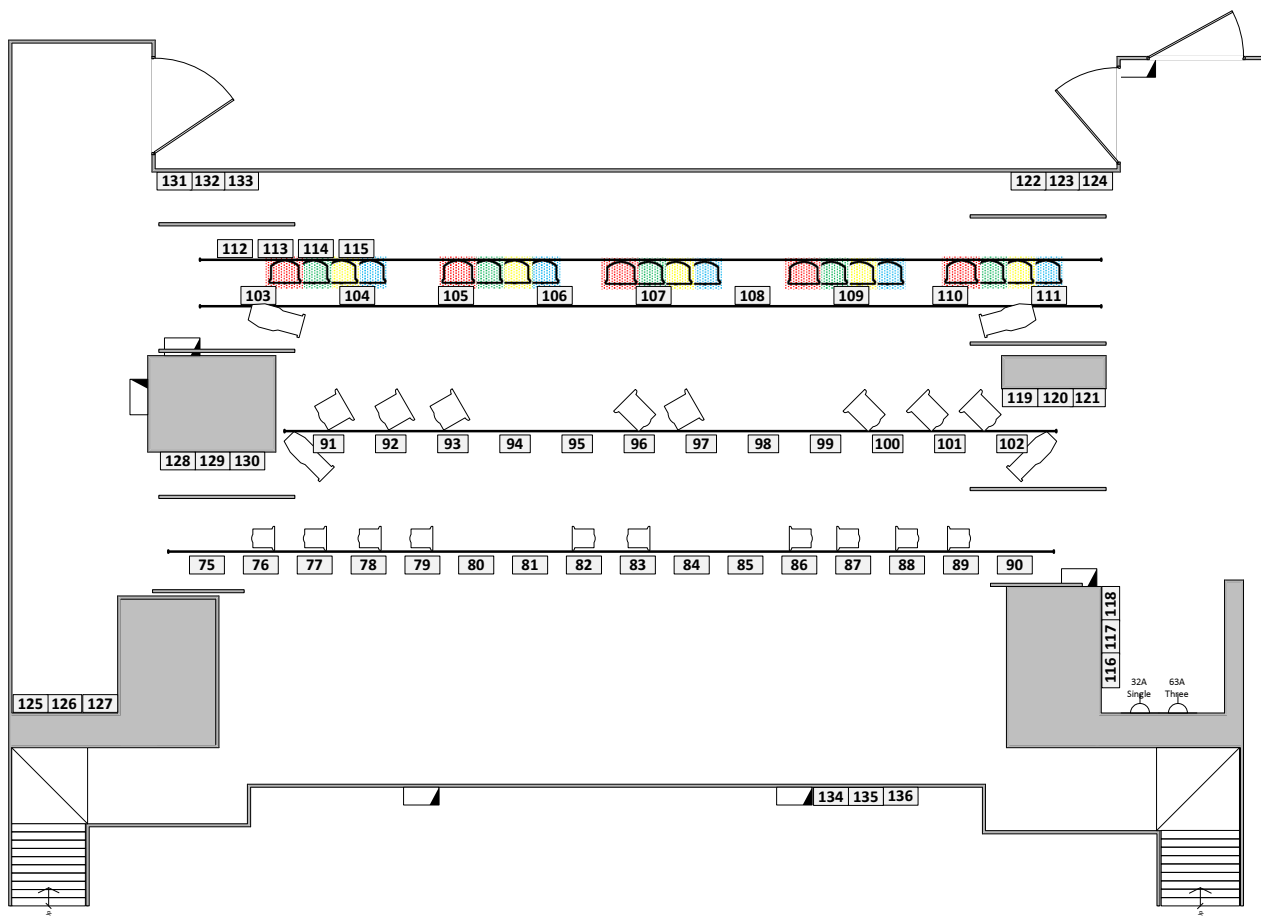
Ellesmere Port Civic Hall - Stage plan



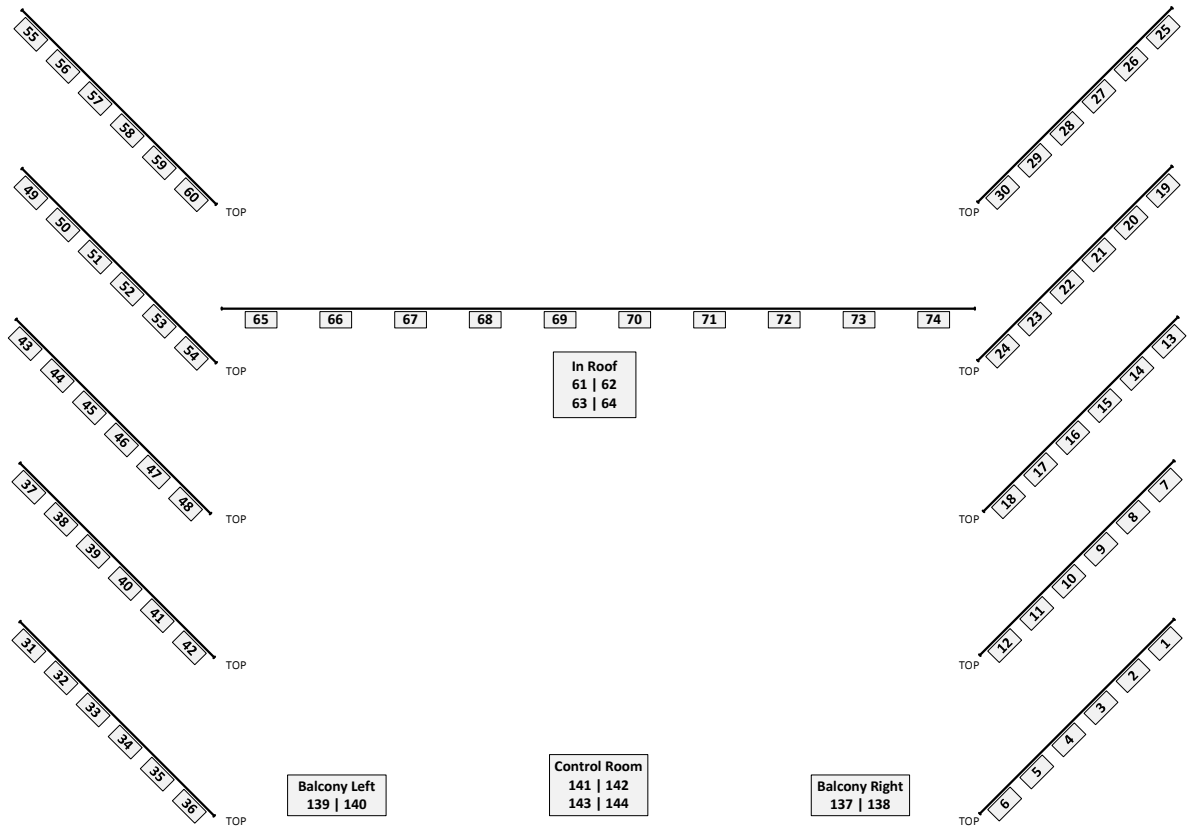
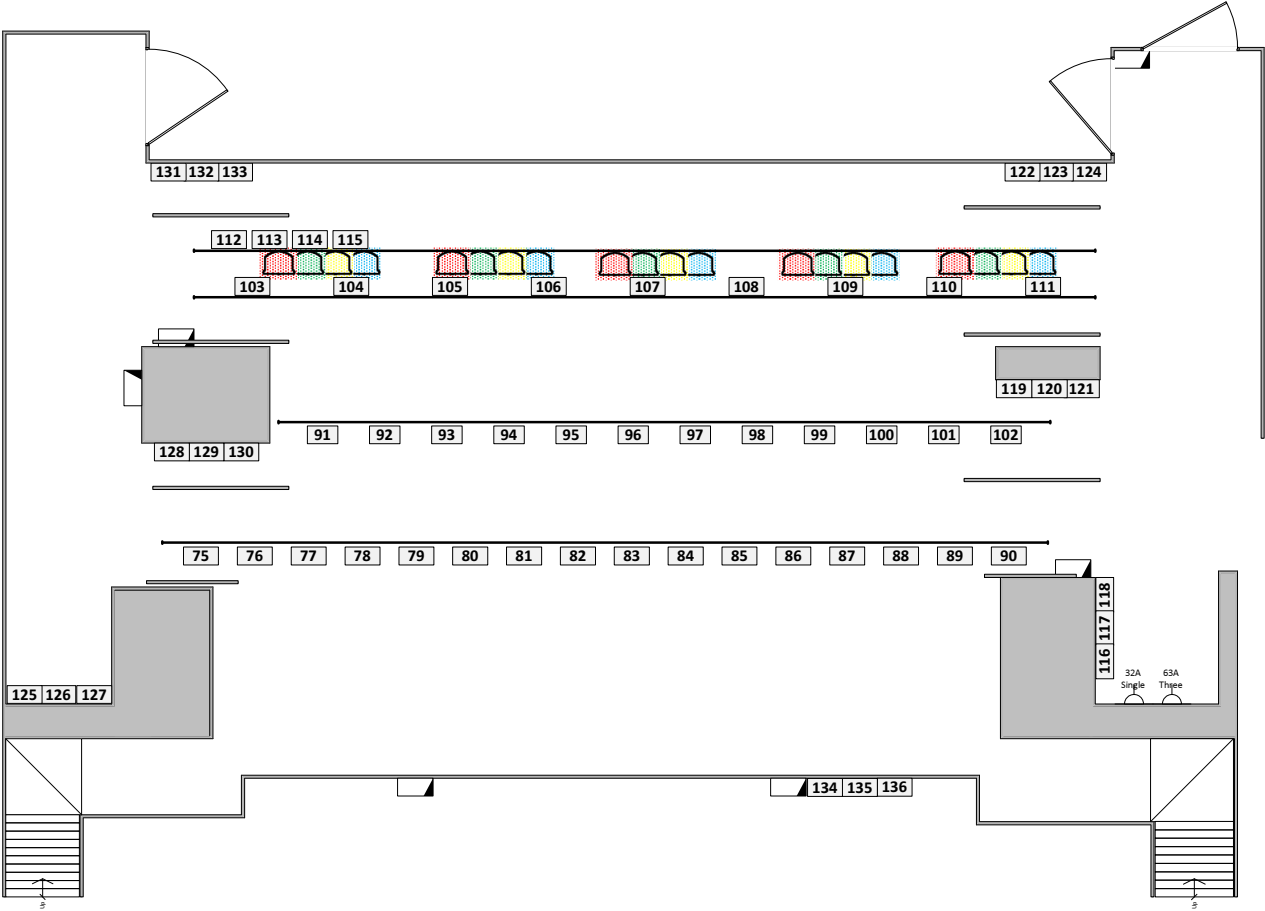
Ellesmere Port Civic Hall - Main Hall Dimensions



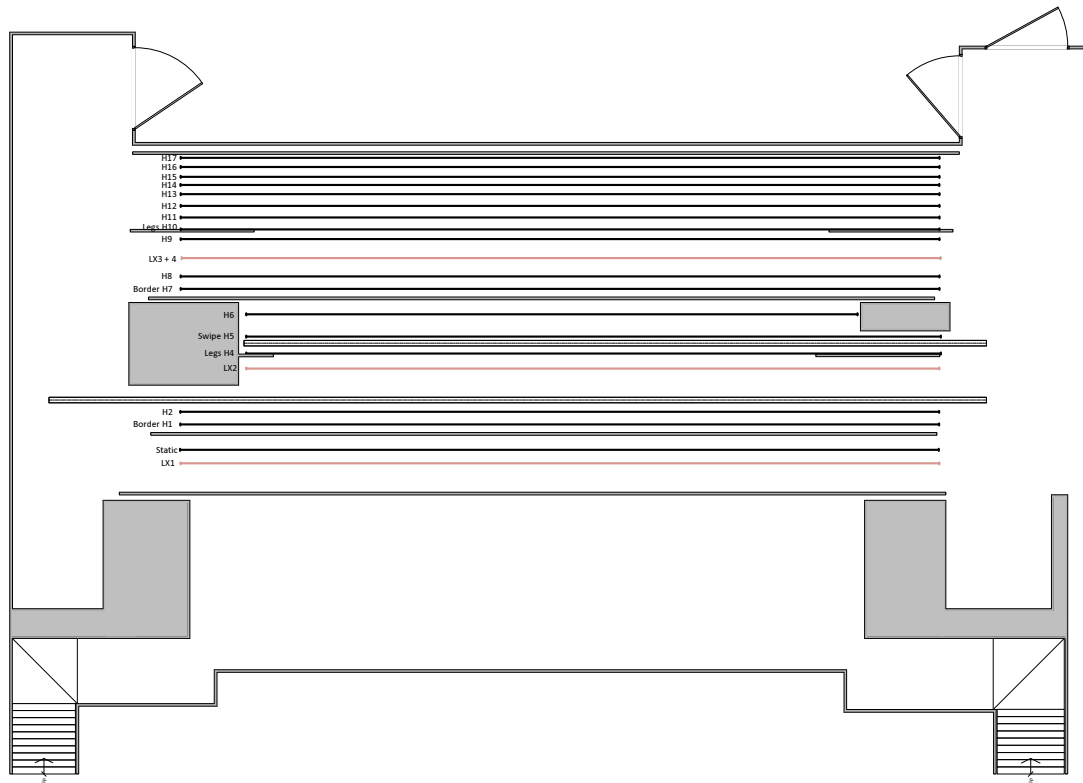
Ellesmere Port Civic Hall - Default Lighting rig



Ellesmere Port Civic Hall - Empty Lighting rig



Ellesmere Port Civic Hall - Suspension layout



Ellesmere Port Civic Hall - Bar dimensions

